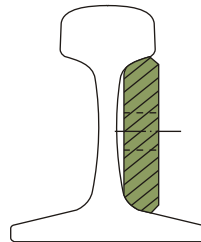
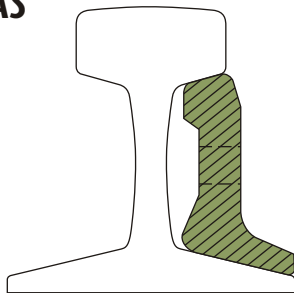


## Acessórios Ferroviários

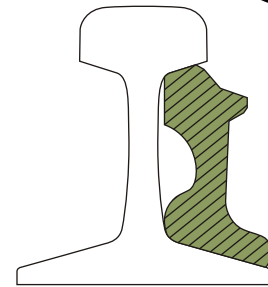
### Acessórios Ferroviários



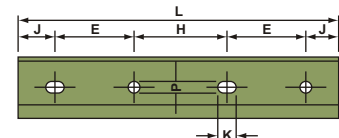
### TALAS



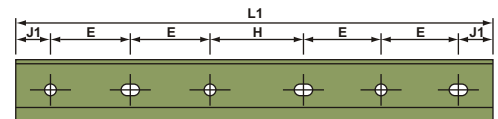
Tala de Junção Plana



TJ	Kg		E	H	J	L	J1	L1	Pø	K
	4	6								
25	5,8		139,7	139,7	95,2	609,5	-	-	22,2	28,6
32	8,4		139,7	139,7	95,2	609,5	-	-	22,2	28,6
37	9,4	14,0	139,7	139,7	95,2	609,5	108	914,5	25,4	31,7
45	14,0	21,1	139,7	139,7	95,2	609,5	108	914,5	27,0	35,7
50	15,2	22,8	139,7	139,7	95,2	609,5	108	914,5	27,0	35,7
57	16,5	25,0	152,4	181,0	61,9	609,5	61,9	914,5	27,0	35,7
68	17,1	25,6	152,4	181,0	61,9	609,5	61,9	914,5	27,0	35,7

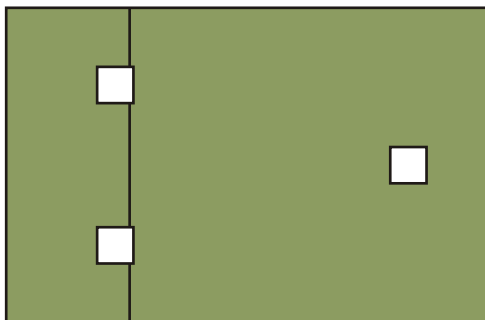


Talas com 4 Furos

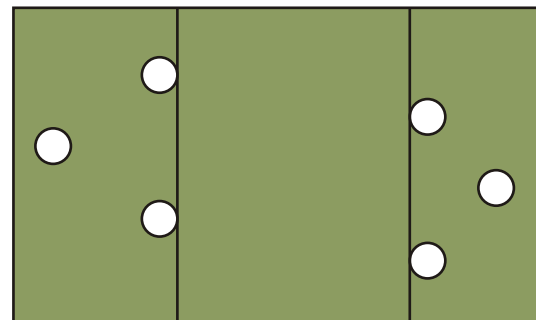


Talas com 6 Furos

### Placas de Apoio - PA



Plana de Apoio PA - 25 Até PA - 50



Plana de Apoio PA - 57/68

\* As Placas de Apoio PA - 25/32/37/45/50 podem ser fornecidas com furos redondos, conforme solicitação do usuário.

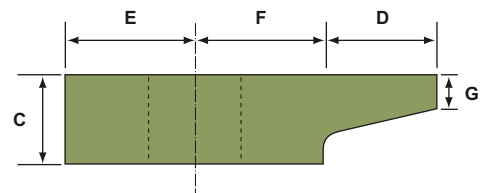
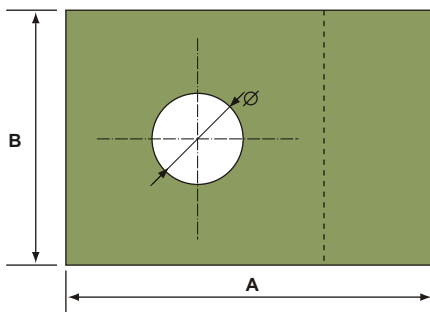
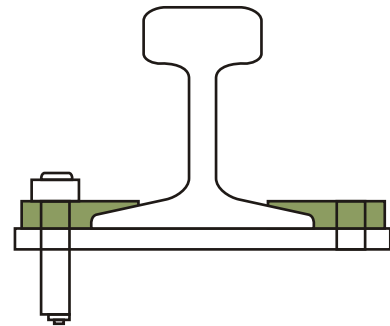
Tipo Tipo	Comprimento Largo mm	Largura Anchura mm	Peso p/ Placa Kg Peso p/ Placa Kg	Diâmetro do Furo Diâmetro del Agujero	Nº de Furos Nº de Agujeros
PA-25	228,6	152,4	3,2	∅ 19	3
PA-32	228,6	152,4	3,2	∅ 19	3
PA-37	228,6	152,4	3,2	∅ 19	3/4
PA-45	254,0	158,8	3,8	∅ 19	3/4
PA-50	266,7	196,9	5,3	∅ 19	3/4
PA-57	330,2	196,9	8,9	∅ 23,8	6
PA-68	406,4	196,9	13,9	∅ 23,8	6

## Acessórios Ferroviários

### Acessórios Ferroviários

#### Presilhas - CF 25/68

	A	B	C	D	E	F	∅	G
25	65	60	18	45	20	20	18	8
32	65	60	18	45	20	20	18	8
37	100	70	23	30	35	35	22.3	8
45	100	70	25	30	35	38	25.4	8
50	100	70	25	30	35	38	25.4	8
52	100	70	25	30	35	38	25.4	8
57	100	70	25	30	35	38	25.4	8
68	100	70	28	30	35	38	25.4	8



#### Parafuso para Tala de Junção

TJ	Polegadas Pulgadas	Milímetros Milímetros
TJ-25	3/4 x 3.1/2	19.0 x 88.9
TJ-32	3/4 x 4	19.0 x 101.6
TJ-37	7/8 x 4.12	22.2 x 114.3
TJ-45	1 x 5	25.4 x 127.0
TJ-50	1 x 5.1/2	25.4 x 139.7
TJ-57	1 x 6	25.4 x 152.4
TJ-68	1 x 6	25.4 x 152.4

